

'17-'18 GC Tourney



Oil Pattern Distance: 40 Feet **Reverse Brush Drop:** 37 Feet **Oil Per Board:** 50 uL
Forward Oil Total: 14.35 mL **Reverse Oil Total:** 12.1 mL **Volume Oil Total:** 26.45 mL
Forward Boards Crossed: 287 Boards **Reverse Boards Crossed:** 242 Boards **Total Boards Crossed:** 529 Boards

	Start	Stop	Loads	Speed	Crossed	Start	End	Feet	T.Oil
1	2L	2R	2	14	74	0.0	1.9	1.9	3700
2	4L	4R	1	18	33	1.9	4.4	2.5	1650
3	5L	5R	1	18	31	4.4	6.9	2.5	1550
4	7L	7R	1	18	27	6.9	9.4	2.5	1350
5	9L	9R	2	22	46	9.4	15.6	6.2	2300
6	10L	10R	1	22	21	15.6	18.7	3.1	1050
7	11L	11R	2	22	38	18.7	24.9	6.2	1900
8	12L	12R	1	22	17	24.9	28.0	3.1	850
9	2L	2R	0	22	0	28.0	33.0	5.0	0
10	2L	2R	0	26	0	33.0	40.0	7.0	0

Navigation: Forward Reverse More

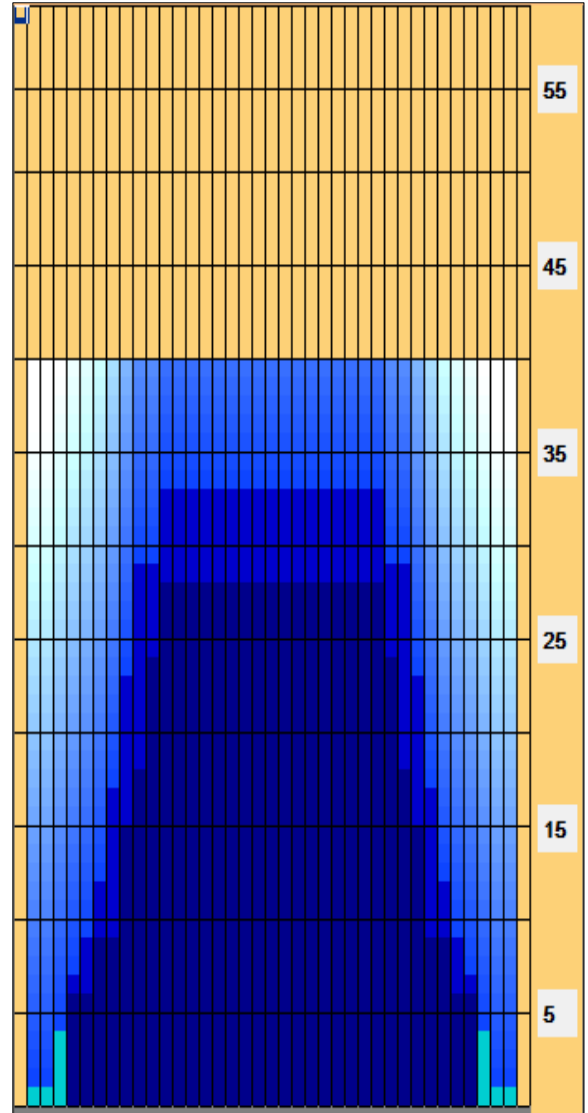
	Start	Stop	Loads	Speed	Crossed	Start	End	Feet	T.Oil
1	2L	2R	0	30	0	40.0	33.0	-7.0	0
2	12L	12R	1	26	17	33.0	29.4	-3.6	850
3	10L	10R	2	22	42	29.4	23.2	-6.2	2100
4	9L	9R	2	22	46	23.2	17.0	-6.2	2300
5	8L	8R	2	18	50	17.0	11.9	-5.1	2500
6	7L	7R	1	18	27	11.9	9.4	-2.5	1350
7	6L	6R	1	18	29	9.4	6.9	-2.5	1450
8	5L	5R	1	18	31	6.9	4.4	-2.5	1550
9	2L	2R	0	14	0	4.4	0.0	-4.4	0

Navigation: Forward Reverse More

Conditioner:
Type In or Select One

TransferType:
Type In or Select One

- Forward
- Reverse
- Combined
- Buff



Item	3L-7L:18L-18R	8L-12L:18L-18R	13L-17L:18L-18R	18L-18R:17R-13R	18L-18R:12R-8R	18L-18R:7R-3R
Description	Outside Track:Middle	Middle Track:Middle	Inside Track:Middle	Middle:Inside Track	Middle:Middle Track	Middle:Outside Track
Track Zone Ratio	4.38	1.3	1	1	1.3	4.38

